

1-085 Safety Quarter-Turn Pr20.1 L18

Tool operable, IP 65, Vibration resistant



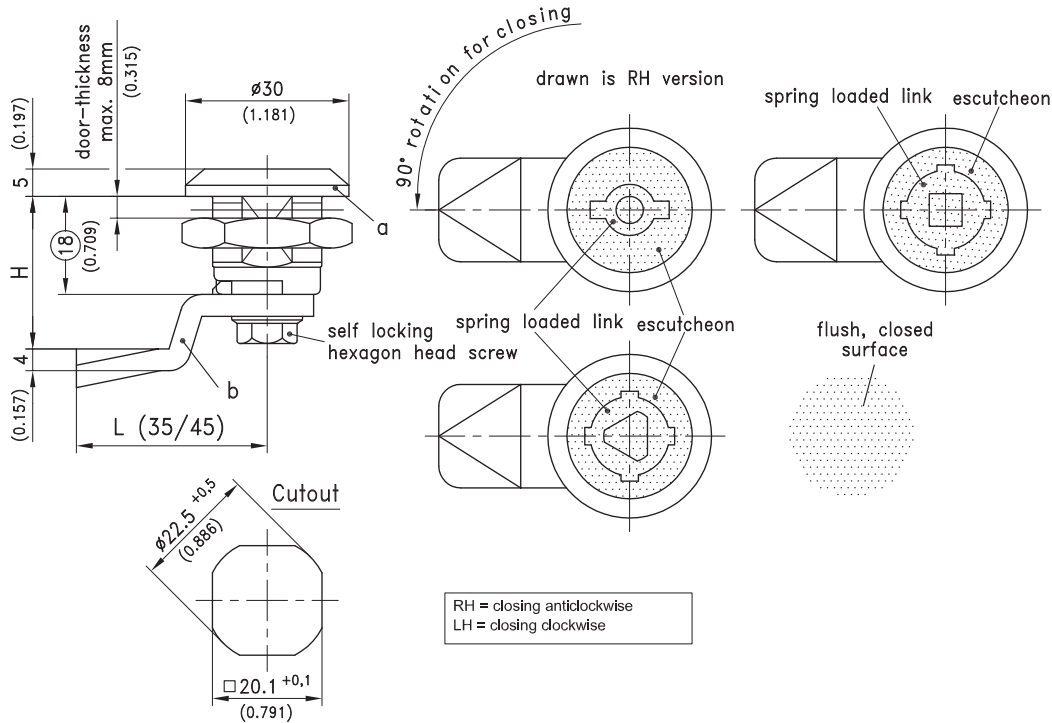
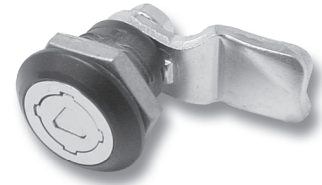
Product Notes:

- With double bit version operation requires appropriate key
- The double bit key is captive in open position according to DIN 43668
- Water and dust tight according to IP65, DIN EN 60529
- Flush housing surface
- **NOTE: The black version always has the inserts, escutcheon and link in chrome plating**
- Integrated housing and insert provides tight sealing
- Vibration resistant
- RH and LH application
- Low profile

- Other screw-on - see Product System 1-085.01
- Tool-less installation - see Product System 1-085SL
- Stainless steel - see Product System 7-074 and 7-075

Material:

- **Housing:** Zinc Die, Black or chrome plated
- **Spring loaded link and Escutcheon:** Zinc Die, Chrome Plated
- **Insert:** Zinc Die, Chrome Plated
- **Cam:** Steel, Zinc Plated



a) Control Unit completely assembled and sealed (IP65) but without cam			See Page
Insert		Housing Chrome Plated	Housing Black
Square 6mm	RH / LH	255-9801	255-9851
Square 7mm	RH / LH	255-9802	255-9852
Square 8mm	RH / LH	255-9803	255-9853
Triangular 6,5mm CNOMO	RH / LH	255-9806	255-9856
Triangular 7mm	RH / LH	255-9804	255-9854
Triangular 8mm	RH / LH	255-9805	255-9855
Double bit 3mm pin	RH*	255-9807	255-9857
Double bit 3mm pin	LH	255-9808	255-9858
Double bit 5mm pin	RH*	255-9809	255-9859
Double bit 5mm pin	LH	255-9810	255-9860
Keys for inserts			10.18
b) Cam Steel, Zinc Plated (on request parts can be assembled)			01.101
b1) Special cams			01.102
Optional:			
c) Assembling of cam		200-0001	200-0001
Stainless steel version			01.34
*as drawn			